



Quarter 1, 2021 Visitor Arrivals Snapshot



Table of Contents

- 1. March Quarter 2021 Highlights**
- 2. Global Travel Trends by Region, March Quarter 2021**
- 3. Global Travel Trends, 2020 and Beyond**
- 4. Pacific Destinations, March Quarter 2021**
- 5. Pacific Destinations COVID-19 Status, March Quarter 2021**
- 6. Pacific Source Markets, March Quarter 2021**
- 7. International Visitor Arrival Trends to the Pacific**
- 8. Total Visitor Arrivals (Air and Cruise), March Quarter 2021**
- 9. Total Visitor Arrivals (Air) by Pacific Groupings, March Quarter 2021**
- 10. Annex Tables**

March Quarter 2021 Highlight

The outlook for 2021 begins on a positive note, with the global economy expected to expand by 5.6% according to the World Bank¹ which will be driven mostly by strong rebounds in a number of key economies such as the United States and China. Key stakeholder partnerships across the globe are vital in accelerating the distribution of vaccines and debt relief in the relative countries. As the pandemic eases up, the World Bank highlights the key role of policy makers in mitigating the lasting impacts of the global health crisis by inspiring “green, resilient, and inclusive growth while safeguarding macroeconomic stability.”

Information released by the World Tourism Organisation (UNWTO) in May 2021 showed² that international tourist arrivals for the March Quarter in 2021 dropped by 82.7% when compared to the same period in 2020. The substantial loss represents about 180 million fewer international arrivals against Quarter 1 in 2020, or 265 million international arrivals compared to pre-COVID numbers in 2019. Since the end of 2020, many countries began to strengthen travel border and travel restrictions in light of the surge in confirmed cases and the rise of new variants which have contributed to the delay in the resumption of travel worldwide. However, with the increasing number of vaccines administered in countries across the globe, consumer confidence is slowly being restored, and travel restrictions are gradually easing.

Visitor Arrivals to the Pacific ACP and SPTO member countries recorded³ 7,445 in March Quarter 2021, and this marked a substantial 97.8% drop over the March Quarter in 2020. Although French Polynesia’s international borders opened in July (with strict conditions in place), tourist travel to the islands was banned in February 2021 in light of the significant increases in the number of COVID-19 cases.

In terms of destination shares, French Polynesia accounted for 63.7% of the total visitor arrivals in the region, with Fiji following at 32.3% and the remaining 4% made up of Cook Islands at 3.5% and Kiribati at 0.5%. The remaining destinations either recorded zero arrivals, or did not submit data. For French Polynesia, the arrivals were mainly tourists while for Fiji, Cook Islands and Kiribati, arrivals were mostly from repatriation flights and those travelling for work.

In the March Quarter 2021 alone, the pandemic recorded close to 45.8 million confirmed cases and close to 1.04 million deaths worldwide. For the SPTO member countries, there were 8,739 confirmed cases and 83 confirmed deaths recorded. The pandemic showed no signs of slowing down worldwide and has reported⁴ just over 183.9 million confirmed cases, with over 4.0 million deaths as at 6th July 2021. In terms of vaccinations, close to 3 billion vaccine doses have been administered as of 5th July 2021.



Source: UNWTO World Tourism Barometer May 2021, NTOs and NSOs

Note: Visitor Arrivals based on available data. Other countries either did not submit data, or recorded zero arrivals for the reporting period. Also, French Polynesia opened International Borders in July 2020, before restricting travel again in February 2021 due to the sharp increase in COVID-19 cases.

¹ World Bank Press Release “Global Recovery Strong but Uneven as Many Developing Countries Struggle with the Pandemic’s Lasting Effects” (8th June 2021).

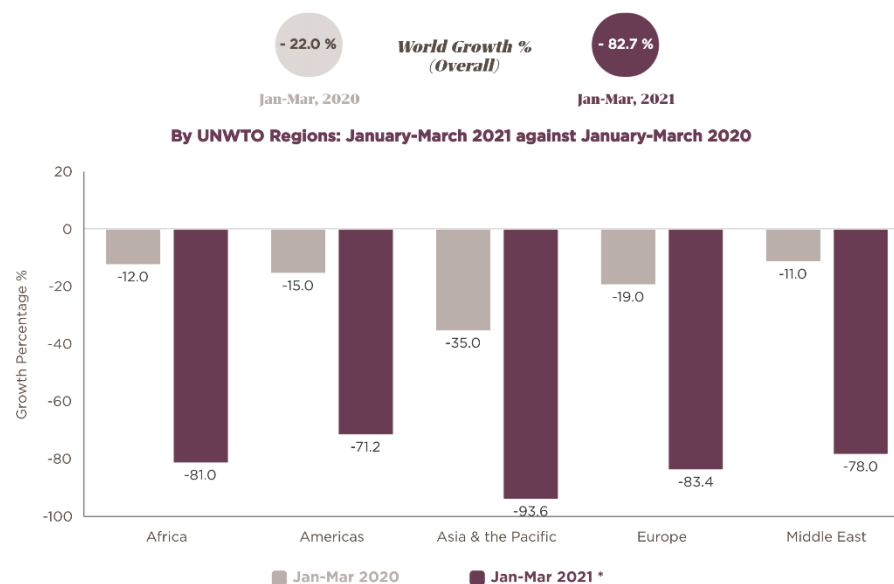
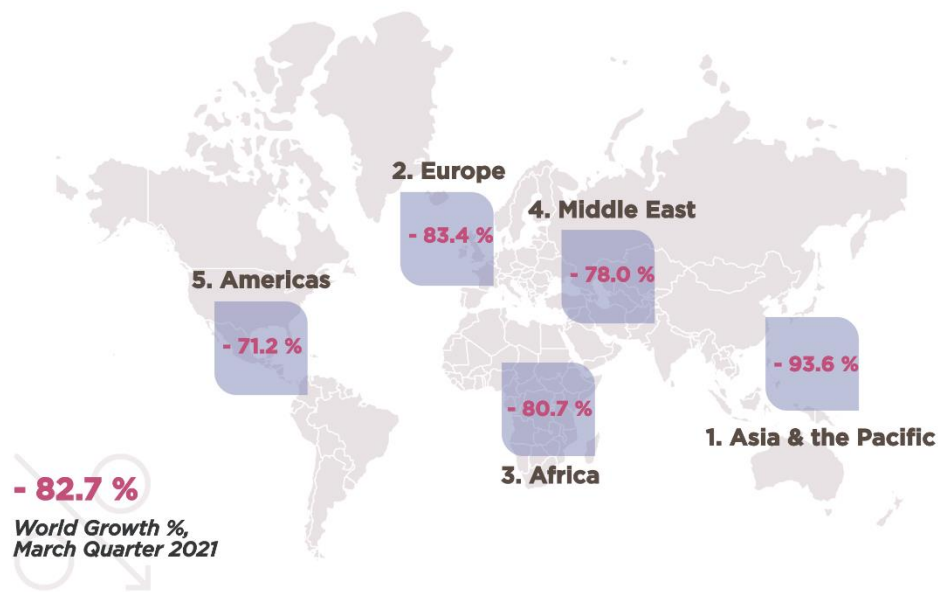
² The World Tourism Organisation (UNWTO) World Tourism Barometer (Volume 19, Issue 3 – May 2021).

³ National Tourist Offices (NTOs) and National Statistics Offices (NSOs).

⁴ WHO Coronavirus Disease (COVID-19) Dashboard.

Global Travel Trends by Region, March Quarter 2021

January-March 2021 International Tourist Arrivals Growth % by (Sub) region



Source: UNWTO World Tourism Barometer May 2021

Note: For 2020, percentage for Asia only listed. In 2021, Asia & the Pacific percentage growth listed.

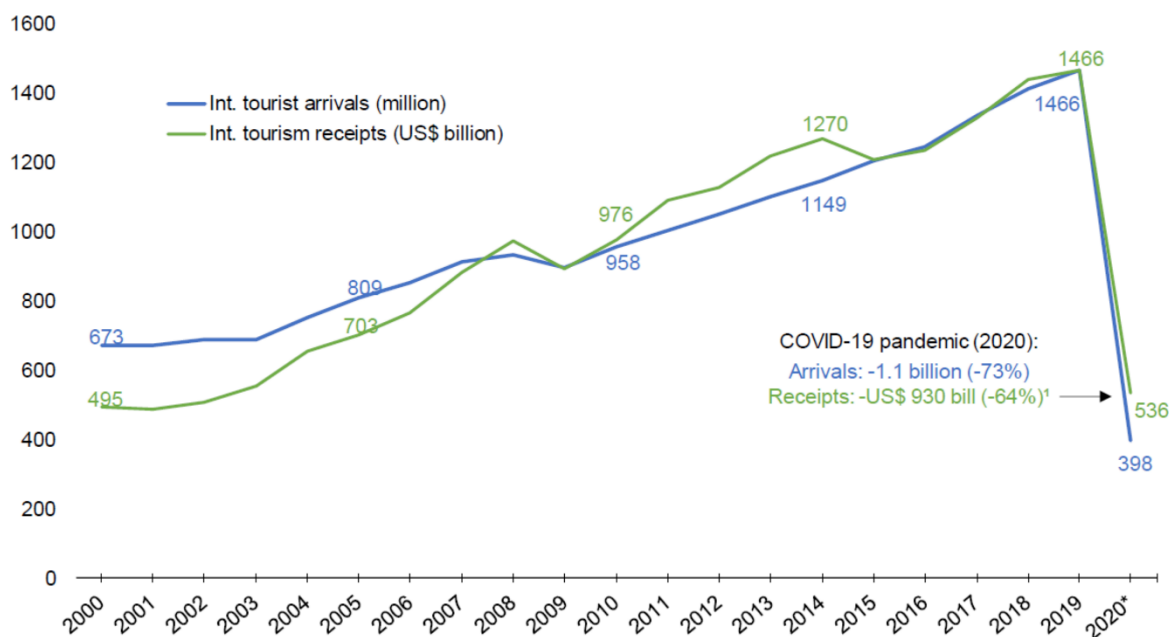
The UNWTO⁵ also reported that:

- “Although data for March showed a comparatively smaller decline of 65%, this is compared to March 2020 when arrivals had fallen significantly below 2019 levels. Arrivals in March 2021 were in fact 88% below the same month of 2019”.
- “While demand for international tourism dropped sharply and still remains subdued, domestic tourism continued to grow in several large markets such as China and the Russian Federation, where domestic air travel has returned to pre-COVID levels”.

⁵ The World Tourism Organisation (UNWTO) World Tourism Barometer (Volume 19, Issue 3 – May 2021)

Global Travel Trends, 2020 and 2021

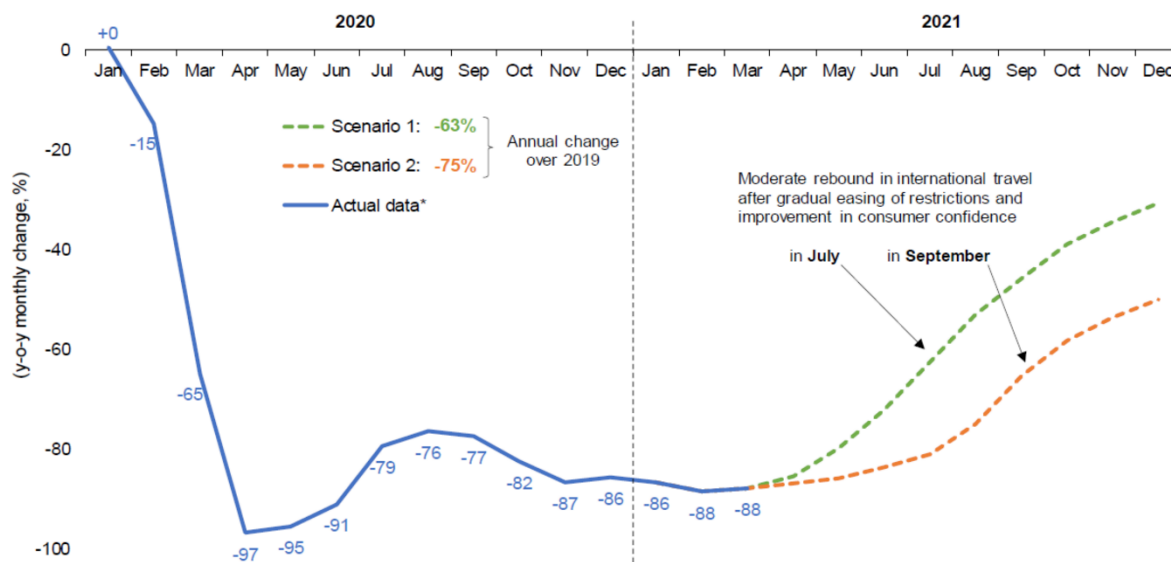
International Tourist Arrivals and International Tourism Receipts: 2000-2020*



Source: UNWTO World Tourism Barometer May 2021

Note: 2020 graph based on Provisional Data, and also shows Real Percentage Change (Local Currencies, Constant Prices).

International tourist arrivals in 2020 and Scenarios for 2021 (y-o-y monthly change, %)



Source: UNWTO World Tourism Barometer May 2021

Note: Actual data is preliminary, and based on estimates for destinations which have not yet reported monthly results. Data as of March 2021. The dotted lines represent the two different UNWTO Scenarios representing alternative recovery paths based on the lifting of travel restrictions and the subsequent increase in traveler confidence in either July or September 2021.

Pacific Destinations, March Quarter 2021

Total Visitor Arrivals (Air), March Quarter 2021



7,445

- 326,759

Absolute Change

March Quarter 2021
against
March Quarter 2020

- 97.8 %

Percentage Change

Breakdown of Pacific Island Destinations, March Quarter 2021

PACIFIC ISLAND DESTINATIONS	Quarter 1, 2020 Visitor Arrivals (Air)	Quarter 1, 2021 Annual Visitor Arrivals (Air)	Absolute Change	% Change
American Samoa	748	-	-748	-100.0
Cook Islands	24,728	264	-24,464	-98.9
FSM	-	-	-	-
Fiji	139,701	2,405	-137,296	-98.3
French Polynesia	36,936	4,741	-32,195	-87.2
Kiribati	1,409	35	-1,374	-97.5
Marshall Islands	-	-	-	-
Nauru	-	-	-	-
New Caledonia	24,405	-	-24,405	-100.0
Niue	-	-	-	-
Palau	18,174	-	-18,174	-100.0
PNG	31,841	-	-31,841	-100.0
Samoa	20,485	-	-20,485	-100.0
Solomon Islands	4,080	-	-4,080	-100.0
Timor Leste	-	-	-	-
Tokelau	-	-	-	-
Tonga	8,932	-	-8,932	-100.0
Tuvalu	-	-	-	-
Vanuatu	21,965	-	-21,965	-100.0
Wallis & Futuna	800	-	-800	-100.0

Source: NTOs, NSOs and SPTO

Note: Visitor arrivals based on available data. French Polynesia had opened its International Borders in July 2020 (with conditions in place), however: chose to close International Borders to tourists in February 2021.

Pacific Destinations COVID-19 Status, March Quarter 2021

Total COVID-19 Cases in March Quarter, 2021

8,739 Confirmed Cases

83 Confirmed Deaths

December Quarter, 2020:

15,441 Cases / 109 Deaths

-6,702 Confirmed Cases
(- 43.4 % Decrease)

*Absolute Change of
Confirmed Deaths and Cases
against December Quarter 2020*

-26 Confirmed Deaths
(- 23.9 % Increase)

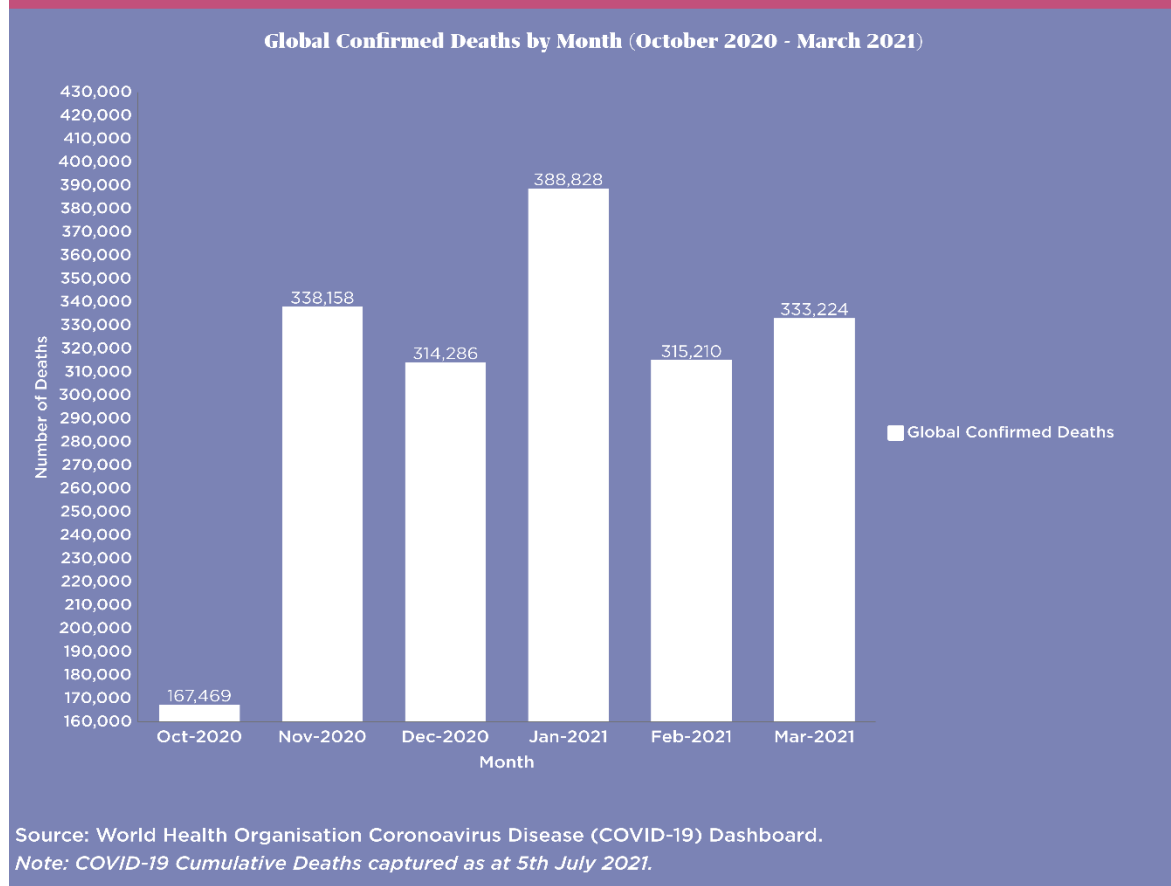
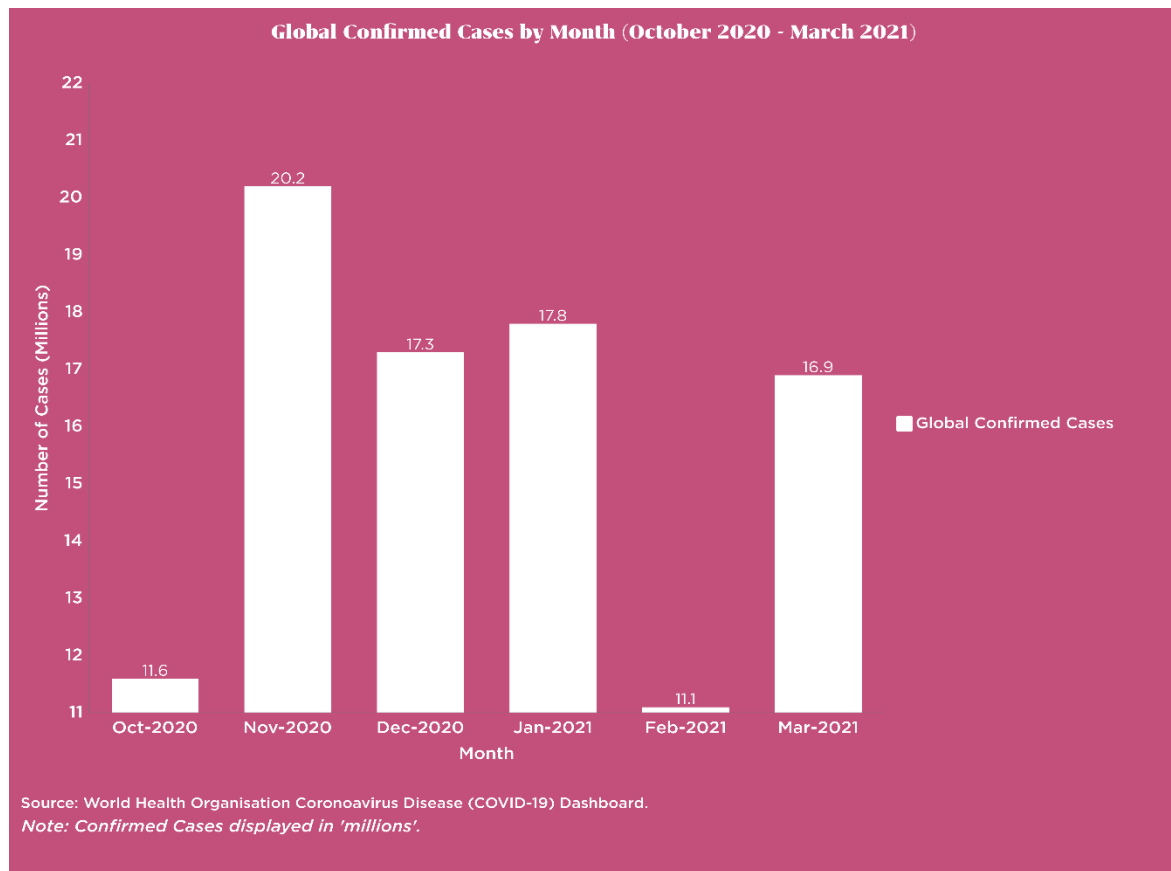
Breakdown of Pacific Island Destinations, March Quarter 2021

Country	Confirmed Cases recorded in March Quarter 2021	Confirmed Deaths recorded in March Quarter 2021	Confirmed Cases (Cumulative) till March Quarter 2021	Confirmed Deaths (Cumulative) till March Quarter 2021
American Samoa	-	-	-	-
Cook Islands	-	-	-	-
FSM	-	-	-	-
Fiji	18	-	49	2
French Polynesia	1,701	27	18,552	141
Kiribati	-	-	-	-
Marshall Islands	-	-	4	-
Nauru	-	-	-	-
New Caledonia	83	-	121	-
Niue	-	-	-	-
Palau	-	-	-	-
PNG	6,077	52	780	61
Samoa	1	-	3	-
Solomon Islands	2	-	19	-
Timor Leste	447	-	44	-
Tokelau	-	-	-	-
Tonga	-	-	-	-
Tuvalu	-	-	-	-
Vanuatu	2	-	3	-
Wallis & Futuna	408	4	412	4

Source: WHO, NTOs, NSOs and SPTO

Note: Information on COVID-19 Cases sourced from the World Health Organisation (WHO) Coronavirus Disease (COVID-19) Dashboard.

Pacific Source Markets, March Quarter 2021



International Visitor Arrival Trends to the Pacific



Breakdown of Quarterly Visitor Arrivals: March Quarter 2019 - March Quarter 2021

Month	2019	2020	2021	% Change 2021 vs 2020
January	147,276	154,257	4,537	- 97.1 %
February	121,559	115,464	696	- 99.4 %
March	193,285	64,483	2,212	- 96.6 %

Source: NTOs, NSOs and SPTO

Note: Analysis above based on available data. In the March Quarter 2020, COVID-19 related National Border and Travel Restrictions were enforced across the Pacific. In the September Quarter 2020, French Polynesia opened its International Borders with specific COVID-19 related conditions in place before, during and after the trip. However, in February 2021: French Polynesia banned tourist travel to the islands due to the high number of cases recorded.

Total Visitor Arrivals (Air and Cruise), March Quarter 2021

**Total Air Visitor Arrivals,
March Quarter 2021**

7,445

**Total Cruise Visitor Arrivals,
March Quarter 2021**

N / A

7,445

*Total Visitor Arrivals,
March Quarter 2021*

- 533,559

Absolute Change

*March Quarter 2021
against
March Quarter 2020*

- 98.6 %

Percentage Change

533,559

*Total Visitor Arrivals,
March Quarter 2020*

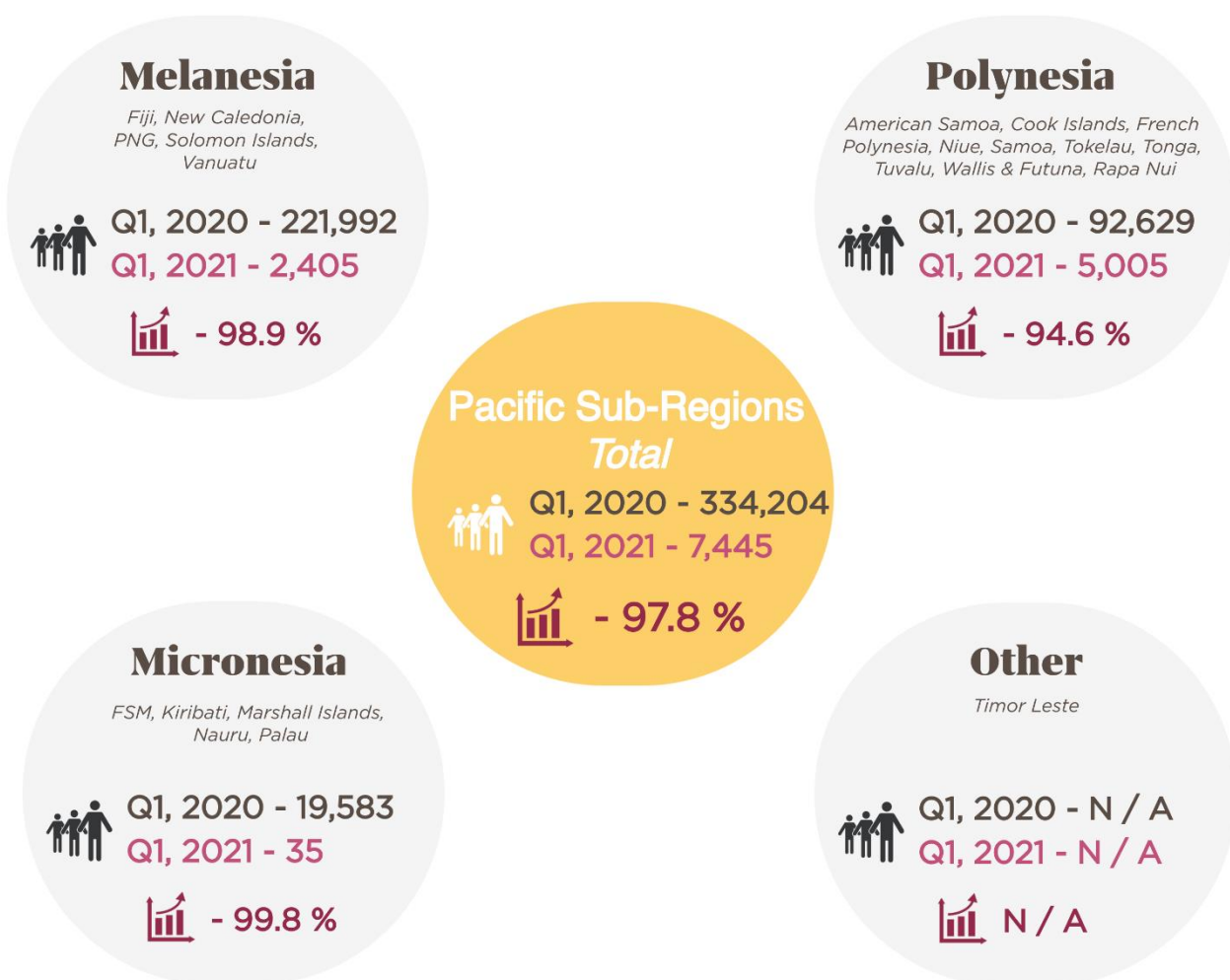
Breakdown of Total Visitor Arrivals

Pacific Destinations	Q1, 2020 Total Arrivals (Air + Cruise)	Q1, 2021 Total Arrivals (Air + Cruise)	% Share of Q1, 2021 Annual Total Arrivals (Air + Cruise)
American Samoa	748	-	-
Cook Islands	24,728	264	3.5%
FSM	-	-	-
Fiji	160,956	2,405	32.3%
French Polynesia	36,936	4,741	63.7%
Kiribati	1,409	35	0.5%
Marshall Islands	-	-	-
Nauru	-	-	-
New Caledonia	142,104	-	-
Niue	-	-	-
Palau	18,174	-	-
PNG	31,841	-	-
Samoa	20,485	-	-
Solomon Islands	4,080	-	-
Timor Leste	-	-	-
Tonga	8,932	-	-
Tuvalu	-	-	-
Vanuatu	82,366	-	-
Wallis & Futuna	800	-	-

Source: NTOs, NSOs and SPTO

Note: Table based on available data.

Total Visitor Arrivals (Air) by Pacific Groupings, March Quarter 2021



Pacific Sub-region % share	Q1, 2020	Q1, 2021
Melanesia	66.4%	32.3%
Polynesia	27.7%	67.2%
Micronesia	5.9%	0.5%
Other	-	-
Total	100.0%	100.0%

Source: NTOs, NSOs and SPTO

Note: Infographic based on data submitted. Some countries have posted zero arrivals for 2020 due to the continued COVID-19 pandemic impact on National Border and Travel Restrictions.

APPENDIX TABLES – 1, 2, 3 and 4

Appendix Table 1

Table 1: Tourist Arrivals to Pacific ACP and SPTO Member Countries

	Annual							Quarterly				
	2014	2015	2016	2017	2018	2019	2020	2020				2021
								Q1	Q2	Q3	Q4	Q1
American Samoa	21,603	20,335	20,050	19,987	20,221	19,237	748	748	-	-	-	-
Cook Islands	121,458	125,132	146,473	161,362	168,760	171,606	25,073	24,728	98	221	26	264
FSM	35,440	30,240	29,485	-	19,207	19,712	-	-	-	-	-	-
Fiji	691,747	754,835	792,320	842,884	870,309	894,389	140,628	139,701	62	333	532	2,405
French Polynesia	180,602	183,831	192,495	198,306	216,458	236,642	77,014	36,936	-	20,116	19,962	4,741
Kiribati	-	5,426	5,118	5,663	6,895	7,906	1,409	1,409	-	-	-	35
Marshall Islands	4,876	6,311	5,332	6,034	6,347	10,771	-	-	-	-	-	-
Nauru	-	-	3,038	-	-	-	-	-	-	-	-	-
New Caledonia	107,187	114,072	115,676	120,697	120,343	130,458	31,228	24,405	720	3,052	3,051	-
Niue	8,169	7,707	8,918	9,922	10,502	9,834	-	-	-	-	-	-
Palau	140,784	161,931	138,416	122,726	106,273	94,030	18,174	18,174	-	-	-	-
PNG	191,442	190,581	155,789	142,943	121,503	159,563	38,665	31,841	801	2,246	3,777	-
Samoa	130,653	136,104	145,176	155,098	167,651	173,920	20,485	20,485	-	-	-	-
Solomon Islands	20,070	21,623	23,192	25,709	27,866	28,930	4,080	4,080	-	-	-	-
Timor Leste	48,986	61,037	92,502	118,586	113,245	111,400	-	-	-	-	-	-
Tonga	50,436	53,731	59,130	62,136	54,046	67,517	8,932	8,932	-	-	-	-
Tuvalu	1,416	2,344	2,465	2,477	3,242	3,611	-	-	-	-	-	-
Vanuatu	108,811	79,279	95,117	109,108	115,634	120,628	21,965	21,965	-	-	-	-
Wallis & Futuna	-	-	-	-	4,207	4,637	2,902	800	52	798	1,252	-
Total	1,863,680	1,954,519	2,030,692	2,103,638	2,152,709	2,264,791	391,303	334,204	1,733	26,766	28,600	7,445

Source: NTOs, NSOs & SPTO.

Note: Figures in red are SPTO estimates. Due to the continuous evolvement of the COVID-19 impact on Visitor Arrivals data, the SPTO did not use estimates for 2020 data.

Appendix Table 2

Table 2: Tourist Arrivals to Pacific ACP and SPTO member countries by Source Market

	Annual						
	2014	2015	2016	2017	2018	2019	2020
Australia	608,847	610,881	614,282	627,649	619,777	638,892	102,762
New Zealand	335,040	359,102	406,631	445,808	473,816	487,158	58,769
United States of America	183,148	195,740	199,336	205,370	223,943	256,536	59,304
United Kingdom	34,612	36,494	34,997	34,228	33,682	35,581	6,932
Europe	164,035	172,787	189,831	186,211	209,204	231,594	63,675
China	88,708	153,119	150,292	140,198	124,963	115,425	14,578
Japan	86,078	78,704	80,202	76,364	77,991	76,690	15,326
India	6,591	7,415	6,570	9,942	10,251	13,245	3,104
South Korea	20,426	19,146	20,884	24,057	27,092	23,609	3,761
Other Asia	69,485	65,392	128,704	134,701	125,724	140,911	15,242
Pacific Islands	133,341	125,909	135,909	157,262	155,760	167,247	31,829
Other Countries	84,383	68,793	63,055	61,848	70,507	77,903	15,096
Total	1,814,694	1,893,482	2,030,692	2,103,638	2,152,709	2,264,791	390,376

Quarterly					
2020				2021	
Q1	Q2	Q3	Q4	Q1	
100,319	469	907	1,067	8	
57,993	206	382	188	263	
42,645	55	6,532	10,072	1,633	
6,755	32	51	94	-	
35,658	641	15,611	11,764	2,957	
13,251	3	518	807	27	
15,242	5	24	55	-	
2,774	18	57	255	-	
3,753	1	6	1	-	
13,953	36	428	825	23	
27,839	163	1,521	2,305	21	
14,023	42	396	635	108	
334,204	1,671	26,433	28,068	5,040	

Source: NTOs, NSOs and SPTO.

Note : Breakdown for Q2, 2020 only provided for Cook Islands, New Caledonia and PNG data. For Q3 2020, the breakdown provided is for Cook Islands, French Polynesia and New Caledonia. For Q4 2020, the breakdown is for Cook Islands, French Polynesia, New Caledonia and PNG. For Q1 2021, breakdown is for Cook Islands, French Polynesia and Kiribati.

Appendix Table 3

TABLE 3: Vaccination Data by Region (As at 31st March 2021)

	Total Vaccinations	People Vaccinated	People Fully Vaccinated	New Vaccinations
<i>SUMMARY OF REGIONS</i>				
Africa	11,475,702	7,744,531	3,995,049	504,032
Asia	256,204,827	99,803,276	28,477,715	10,315,622
Europe	128,831,702	95,373,127	33,357,508	3,036,166
North America	166,112,068	111,419,889	56,617,112	3,375,923
Oceania	806,223	267,749	30,676	79,601
South America	38,161,185	28,682,887	9,478,298	1,599,859
World	601,591,707	343,291,459	131,956,358	18,911,203

Source: Our World in Data.

Link: <https://ourworldindata.org/covid-vaccinations>

Appendix Table 4

Pacific Groupings	Q1, 2020	Q1, 2021	% Change Q1, 2021 vs Q1, 2020	Q1, 2021 % Share
Melanesia				
Fiji	139,701	2,405	-98.3	100.0%
New Caledonia	24,405	-	-100.0	0.0%
PNG	31,841	-	-100.0	0.0%
Solomon Islands	4,080	-	-100.0	0.0%
Vanuatu	21,965	-	-100.0	0.0%
Total	221,992	2,405	-98.9	100.0%
Polynesia				
American Samoa	748	-	-100.0	0.0%
Cook Islands	24,728	264	-98.9	5.3%
French Polynesia	36,936	4,741	-87.2	94.7%
Niue	-	-	-	-
Samoa	20,485	-	-100.0	0.0%
Tonga	8,932	-	-100.0	0.0%
Tokelau	-	-	-	-
Tuvalu	-	-	-	-
Wallis & Futuna	800	-	-100.0	0.0%
Total	92,629	5,005	-94.6	100.0%
Micronesia				
FSM	-	-	-	-
Kiribati	1,409	35	-97.5	100.0%
Marshall Islands	-	-	-	-
Nauru	-	-	-	-
Palau	18,174	-	-100.0	0.0%
Total	19,583	35	-99.8	100.0%
Other				
Timor Leste	-	-	-	-
Total	334,204	7,445	-97.8	-
Pacific Sub-region % share	Q1, 2020	Q1, 2021		
Melanesia	66.4%	32.3%		
Polynesia	27.7%	67.2%		
Micronesia	5.9%	0.5%		
Other	-	-		
Total	100.0%	100.0%		

DEFINITION AND CONCEPTS

According to the UNWTO, the term ‘tourist’ describes a person visiting a country other than that in which he/she has his/her usual place of residence for any reason other than following an occupation remunerated from within the country visited.

The definition covers two categories of tourists, namely,

Tourist: Tourist staying in the country visited for at least one night and not more than one year. However, the term ‘tourist’ is also used in the text of this report interchangeably for better reading but with the same meaning.

Excursionist: Tourist who does not stay overnight in the country visited.

SOURCES OF INFORMATION

All sources of statistical information contained in this publication are acknowledged at the foot of each table – mainly the national statistical offices and national tourism offices.

The source of information for tourist arrival statistics in all member countries is the E/D(Embarkation/Disembarkation) immigration arrival card. All 18 Pacific Island Countries have different E/D arrival card containing the required categories of information, which help distinguish tourists from other passengers and compile statistics according to the internationally accepted definitions and concepts to facilitate inter-country comparisons.



Level 3 FNPF Place
343 - 359 Victoria Place
Suva, Fiji.
Private Mail Bag
Suva, Fiji.



P: +679 3304177 | E: tourism@spto.org | W: southpacificislands.travel